

Sample BS-2

Data collected at UW Madison

Machine conditions for all images

E_0 : 15kw

Filament : 92

Probe current : 55

Pressure : 20 Pa

Variable pressure mode

Mode: back scattering electron

Energy dispersive spectroscopy

Sample map

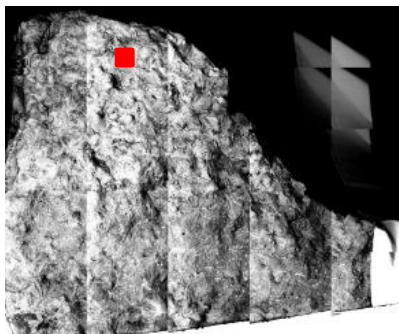
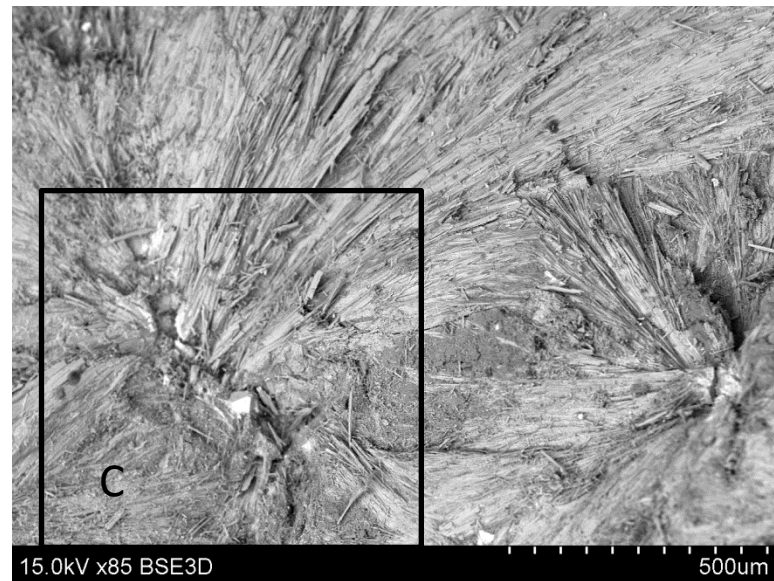
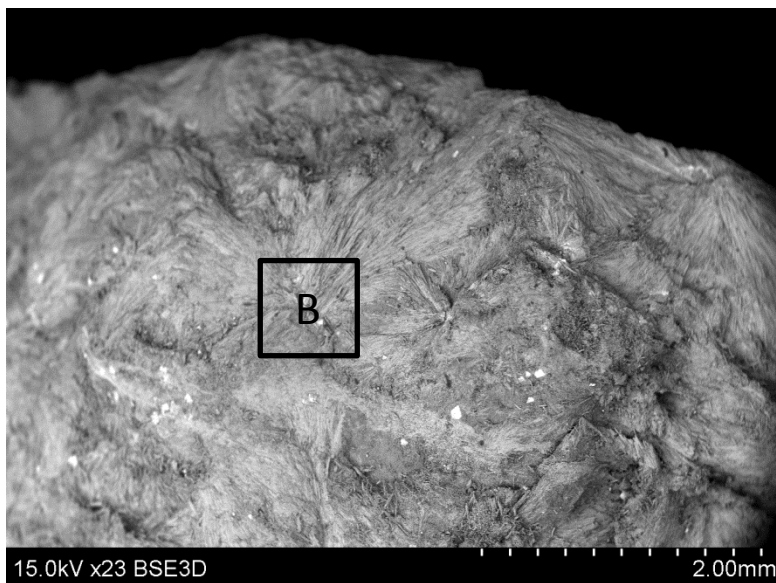
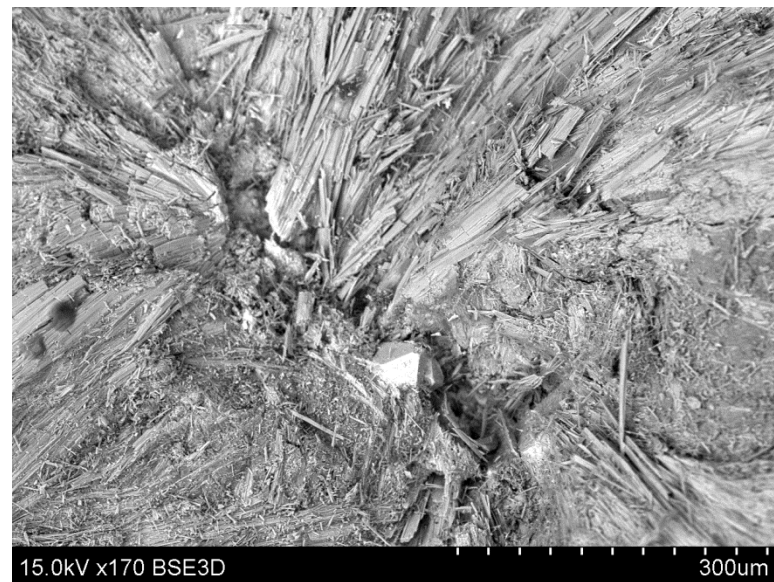


Image location

A



B



C

Progressive magnification

Sample map

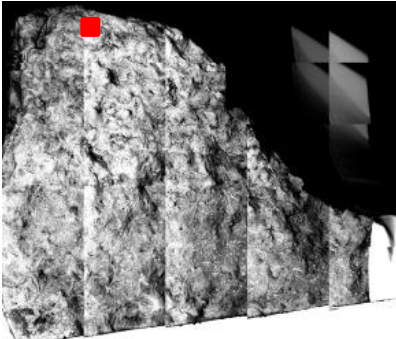


Image location

